



Metro Vancouver's Solid Waste Management Plan

Moving Forward on Waste Reduction and Diversion

Greg Moore

Mayor, City of Port Coquitlam

Chair, Metro Vancouver Waste Management Committee

Thursday February 10th, 2011



The Problem: Too Much Garbage

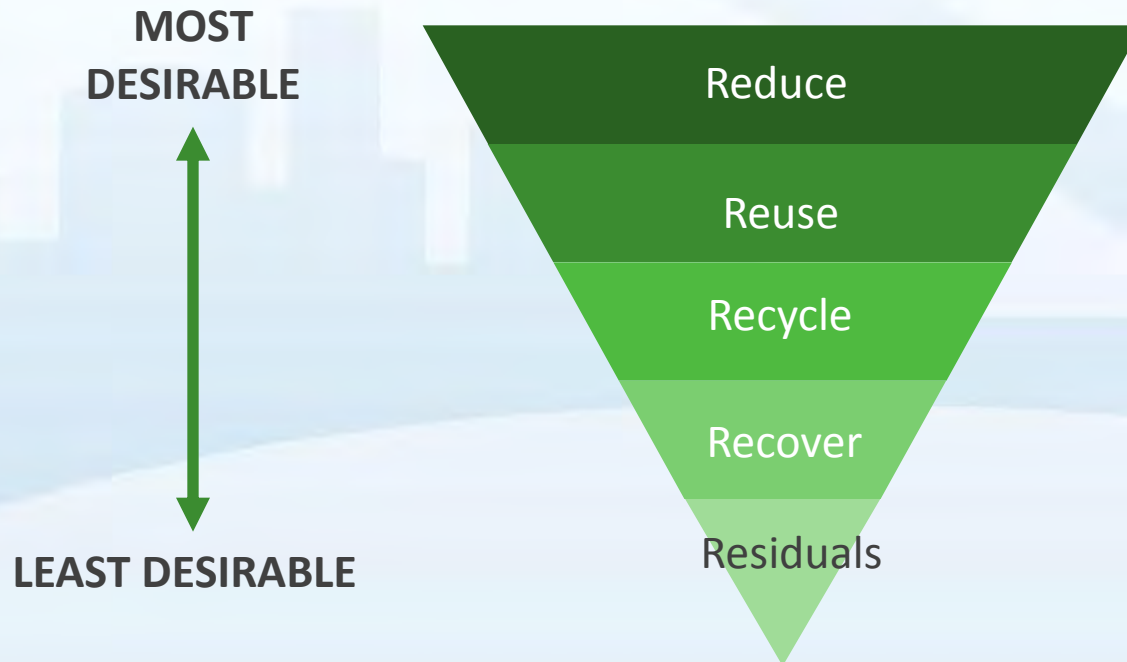
- 3.4 million tonnes of garbage annually
- Currently divert 55%
- Send about 1.6 million tonnes annually for disposal





Waste Management: Challenges

- Reduce waste; Increase reuse and recycling; Enhance resource recovery; Dispose of residuals sustainably
- Complex system, many players, variety of management approaches



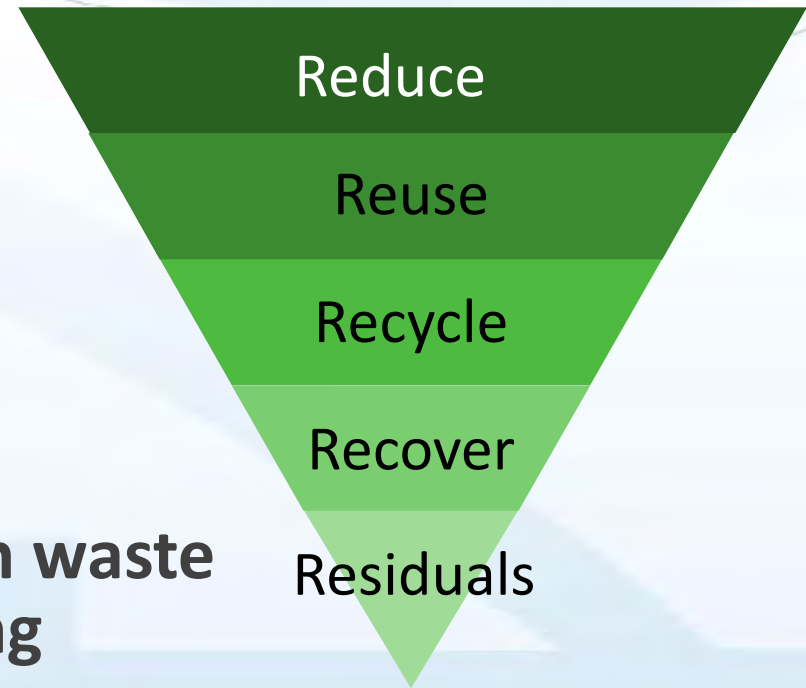
Waste Management: Many Players

- Roles and responsibilities :
 - Regional government – management of solid waste, including waste reduction and managing residuals
 - Municipal Government – collection
 - Private Sector – collection, hauling, recycling and disposal
- Independent waste and recycling collection systems among 24 local authorities



Four Goals

- GOAL 1** Minimize waste generation
- GOAL 2** Maximize reuse, recycling, and material recovery
- GOAL 3** Recover energy from waste stream after recycling
- GOAL 4** Dispose of all remaining waste in landfill after material and energy recovery



Goals 1 and 2

- We have set aggressive targets
 - 10% cut in per capita waste generation by 2020
 - A minimum of 70% diversion rate by 2015
 - Aspire to 80% diversion rate by 2020
- Lagging segments given priority, i.e., commercial sector and multi-family housing



Extended Provincial EPR Programs

- Metro Vancouver partnership with provincial government
- Accelerate expansion
- Mercury, small appliances, packaging



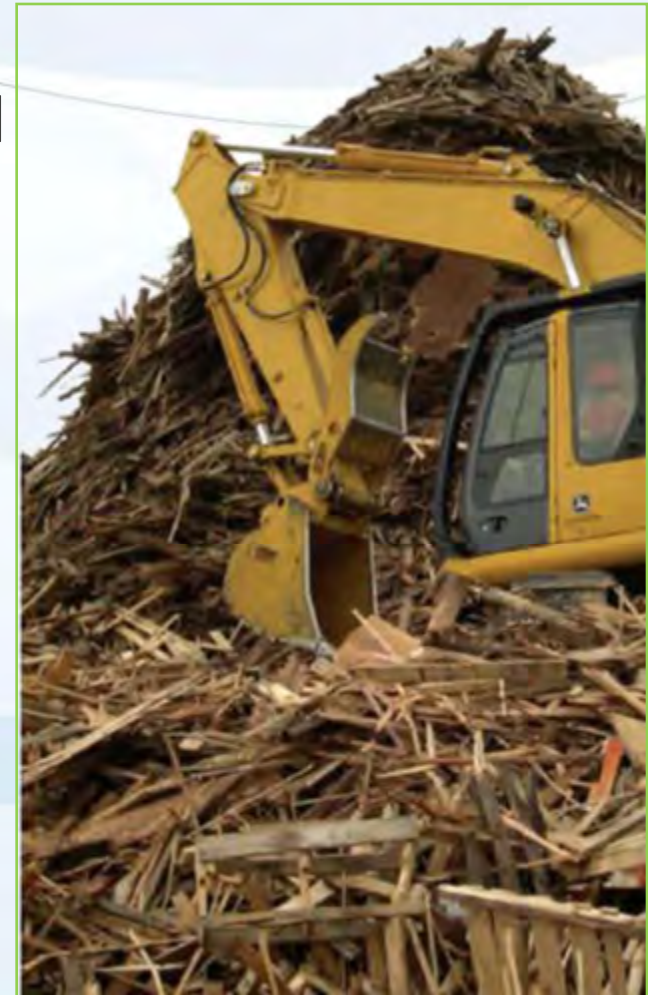
Organics Diversion

- 2007 – Port Coquitlam began curbside organics collection
- 2009-2010
 - Regional composting facility completed
 - Public events waste reduction best practices
 - Behaviour change initiatives targeted at multi-family residents and businesses
- 2011 – New organics (biofuel) facility
- 2012 – Organics (including food) from single-family residential housing will be banned
- 2015 – Organics (including food) from multi-family residential and commercial buildings will be banned



Wood Waste From Construction & Demolition

- 2009 – Wood waste depot pilot
- Behaviour change initiatives targeted at increased waste reduction and reuse among construction, demolition and renovation contractors
- 2011 – Mandatory recycling on jobsites
- 2012 – Clean wood waste will be banned from disposal
- 2015 – All wood waste will be banned from disposal



Paper & Plastic Waste Diversion

- Reduce use and increase recycling by targeting business sector
- Extended Producer Responsibility (EPR) for packaging



Plan Implementation

- Strong consensus from all audiences on 70% diversion target
- Efforts under way to engage public
 - Information and education
 - Social marketing campaigns
 - Personal and community-level behaviour change



MetroVancouverRecycles.org

Metro Vancouver Recycles

Our directory of reuse and recycling services is designed to help you answer the question "Where do I take this?" The database contains over 1,300 locations within the Metro Vancouver region to donate, recycle or appropriately dispose of those items you no longer want.



If you find this resource helpful please tell your friends about www.MetroVancouverRecycles.org.

1. Enter your street address (e.g. 1330 Kingsway) or postal code:

Select the city and specify the distance that you are willing to travel:

Burnaby 20 km

2. Select the category and material you wish to dispose of:

Batteries Auto

Submit a new Dispose/Reuse Facility

We recommend that if you are donating large items or recycling large volumes, to call first to confirm your needs will be met.
You can also call the Recycling Hotline at 604-RECYCLE (604-732-9253).

You searched for locations within 20 km in Burnaby.
Batteries: Auto.

Search returned 52 result(s).

Facility	Trip
Burnaby Recycling Depot » Batteries (Auto;Non-rechargeable;Rechargeable) Drop off	2.2 km
Towing King Towing » Batteries (Auto) Drop off	2.4 km
Carter Dodge Chrysler » Batteries (Auto) Drop off	2.7 km
Edmonds Recycling - Burnaby drop-off » Batteries (Auto;Rechargeable;Non-rechargeable) Drop off, Pick up	3.7 km
Battery World » Batteries (Auto;Rechargeable) Drop off	4.3 km
Polar Batteries » Batteries (Auto) Drop off	4.5 km
Canadian Tire, Burnaby South » Batteries (Auto) Drop off	5.4 km
New Westminster Recycling Depot » Batteries (Auto;Non-rechargeable;Rechargeable) Drop off	5.8 km



Powered by Metro Vancouver






tool by ammap.com



 flickr



 youtube



connect with us

twitter

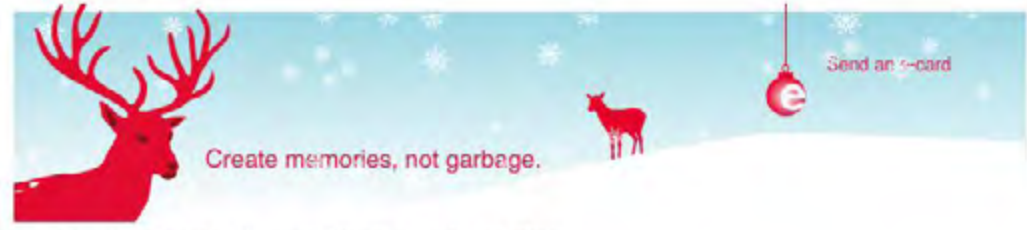


facebook



Metro Vancouver Recycles
Low Waste Gift Ideas
Video Sharing and Resource Page
Christmas Day Song
About the Campaign

Holiday Campaign



Every year there is a surge of garbage in January, attributed to Christmas decorating, meals, and gifting.

As you plan for the holidays, take the time to think about what you are buying and where it will end up. There are lots of ways to celebrate the holiday spirit and share gifts with family and friends without leaning on the landfill.

Take some time and explore some information on garbage and recycling in our region, and try out Metro Vancouver Recycles an online database that will help you find out where to reuse and recycle 100's of items.

MEMORIES OF CHRISTMAS PAST

THE PROBLEM

SOLUTIONS



JUST DON'T TRASH IT

Visit MetroVancouverRecycles.org

reduce, reuse, recycle
or research who
needs it most



JUST DON'T TRASH IT
Visit MetroVancouverRecycles.org



reduce, reuse, recycle
or re-gift it



JUST DON'T TRASH IT
Visit MetroVancouverRecycles.org



reduce, reuse, recycle
or replay



JUST DON'T TRASH IT
Visit MetroVancouverRecycles.org



Multi-Family Recycling

Metro Vancouver Housing pilots:

- Identified barriers and benefits
- Delivered “how to” information
- Made recycling easy with:
 - blue bags
 - food scraps and yard waste collection
 - cardboard collection
 - more blue bins

Results:

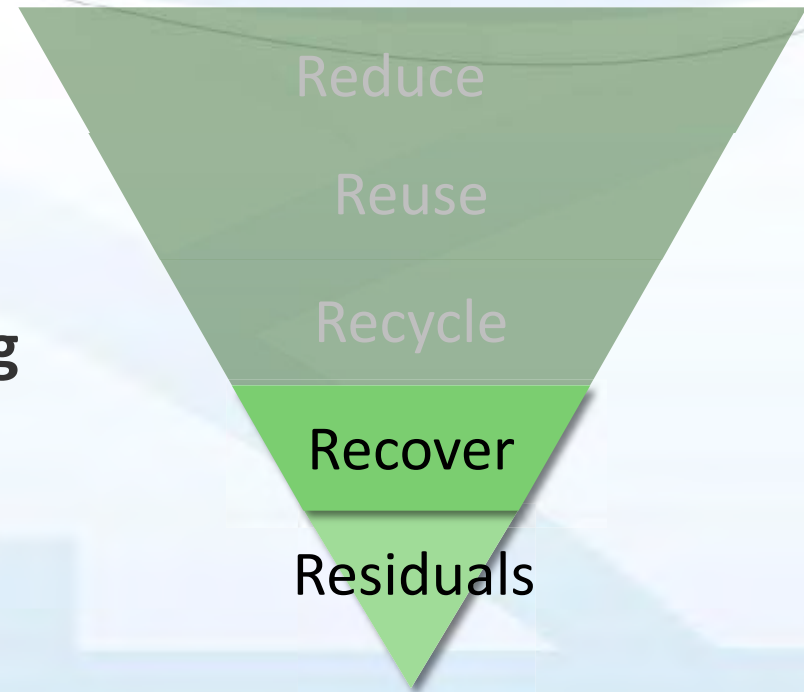
- Recycling increased from 28% -100%
- Private sector pilots under way



Goals 3 and 4

GOAL 3 Recover energy from waste stream after recycling

GOAL 4 Dispose of all remaining waste in landfill after material and energy recovery



Goal 3: Recover Energy From Waste Stream After Recycling

- Continue to use waste-to-energy, and build new capacity to provide electricity and district heat
- Recover landfill gas
- Utilize non-recyclable material for fuel
- New waste-to-energy capacity to be operational in 2015



Goal 4: Dispose of Remain Waste in Landfill

- Continue use of existing in-region landfill, but reduce reliance on landfills from 1.2 million to 400,000 tonnes by 2015, and 100,000 by 2020
- Ensure a disposal site is available for demolition/ construction waste
- Establish disposal contingences



Engaging the Global Community



Engaging the Global Community: *The Challenge*

- Local governments responsible for managing waste
- Heavy economic, social, environmental burden
- Best practices in waste reduction, diversion and disposal unavailable to many local governments
- Waste generation beyond the control of local governments



Engaging the Global Community: *Metro Vancouver Proposal*

- Collaboration to share best practices
 - Diversion
 - Disposal
 - Business models
- Global partnership to foster incentives and regulations that promote cradle-to-cradle product design



Engaging the Global Community: *Desired Outcomes*

- An international clearing house for best practices in sustainable solid waste management
 - Governance
 - Private and public sector role
 - Technology
 - Regulations
 - Financial models
 - Communications and awareness building
 - Behaviour change
 - Protection of public health
 - Climate change mitigation



Thank You

www.metrovancouver.org

Follow [@MetroVancouver](https://twitter.com/MetroVancouver) and [#ZWCC](https://twitter.com/ZWCC)



metrovancouver